

# Atelier iPad et iPhone du Cilac Par Yves Cornil

*Initiation et perfectionnement à l'utilisation de la micro-informatique.*

## iCloud et iCloud Drive sur iPhone sous iOS 13.

III - L'application Fichiers sur iPhone.  
iMovie et iCloud Drive. Enregistrer sur une clé USB.

8/01/2020



©Yves Roger Cornil  
[www.cornil.com](http://www.cornil.com)



1



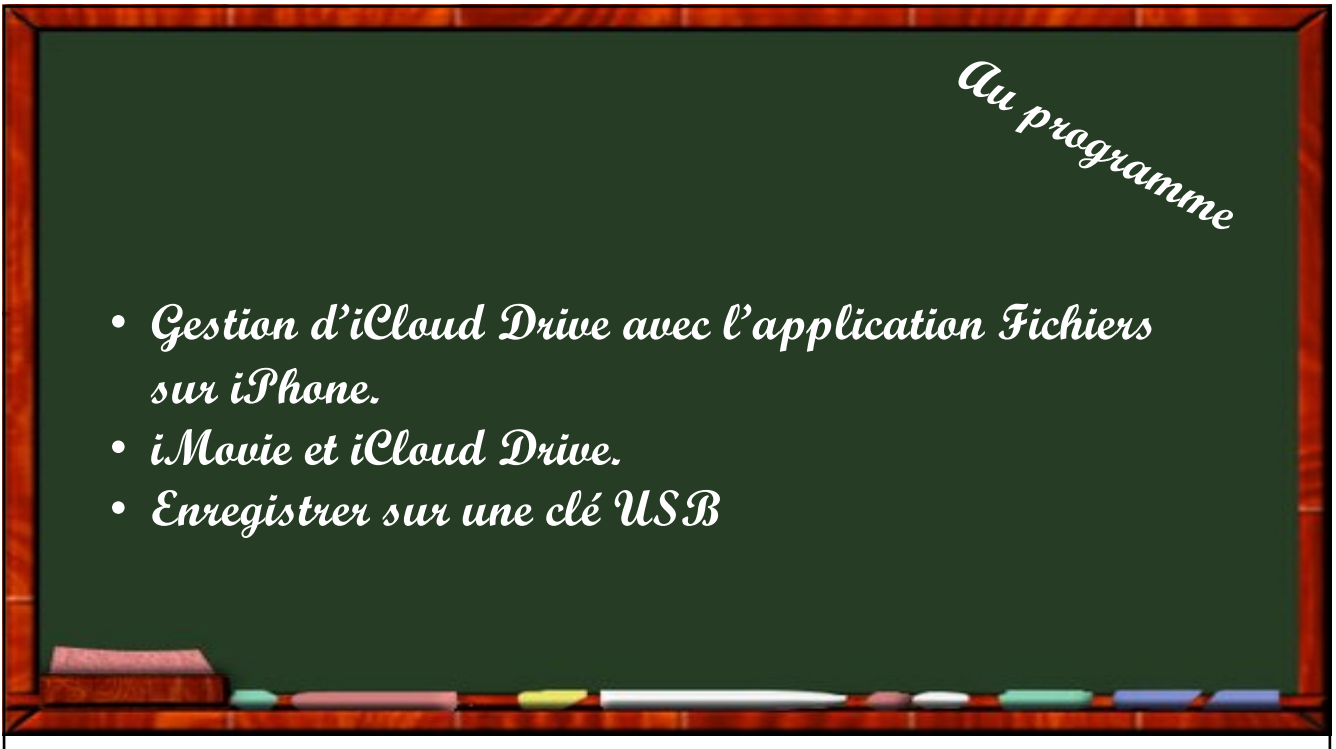
Les ateliers du CILAC

Saison 2019/2020

iPad et iPhone sous iOS 13 et iPadOS 13

1

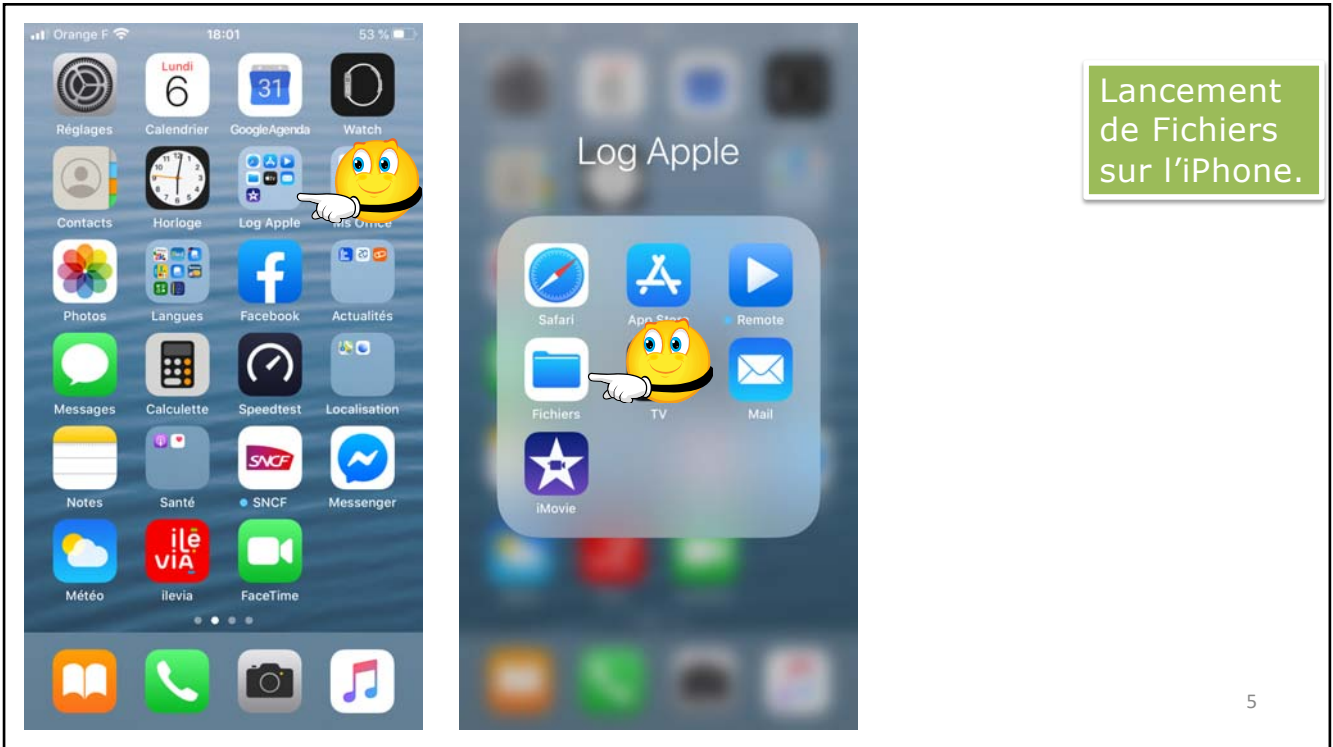
2



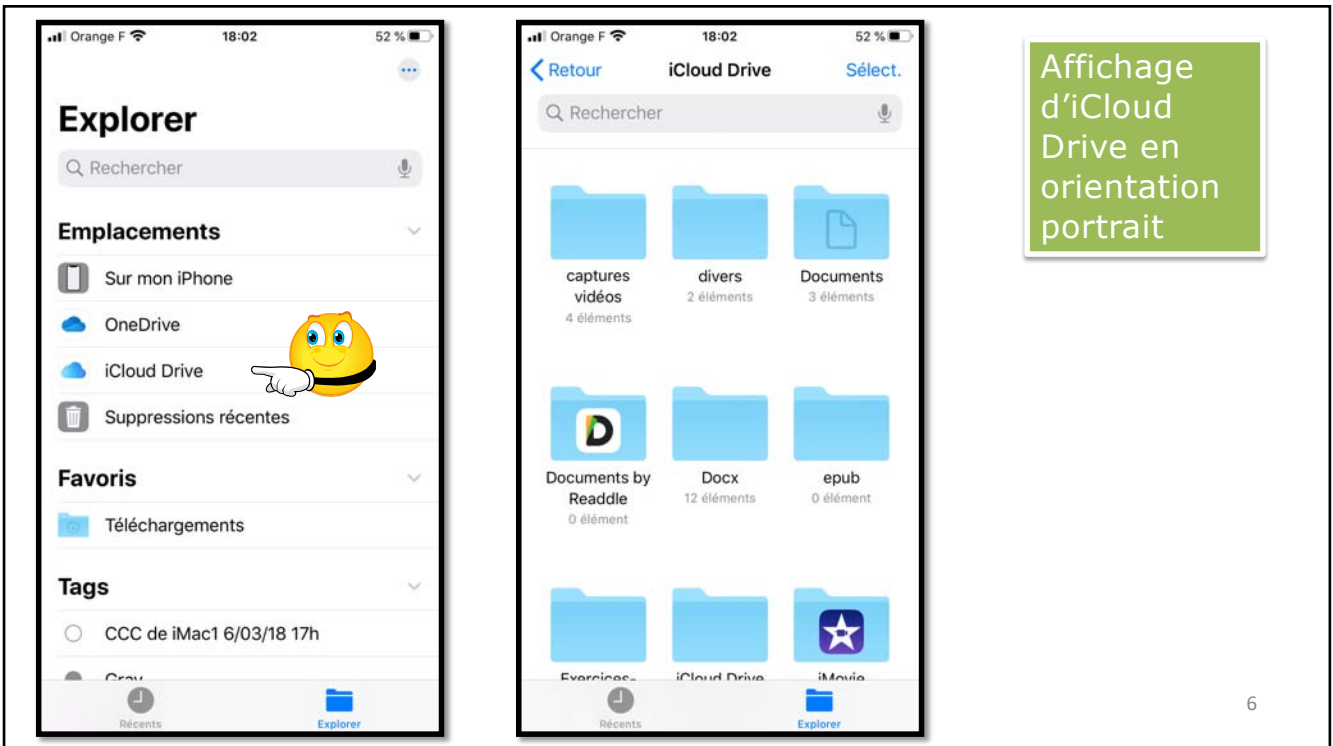
3



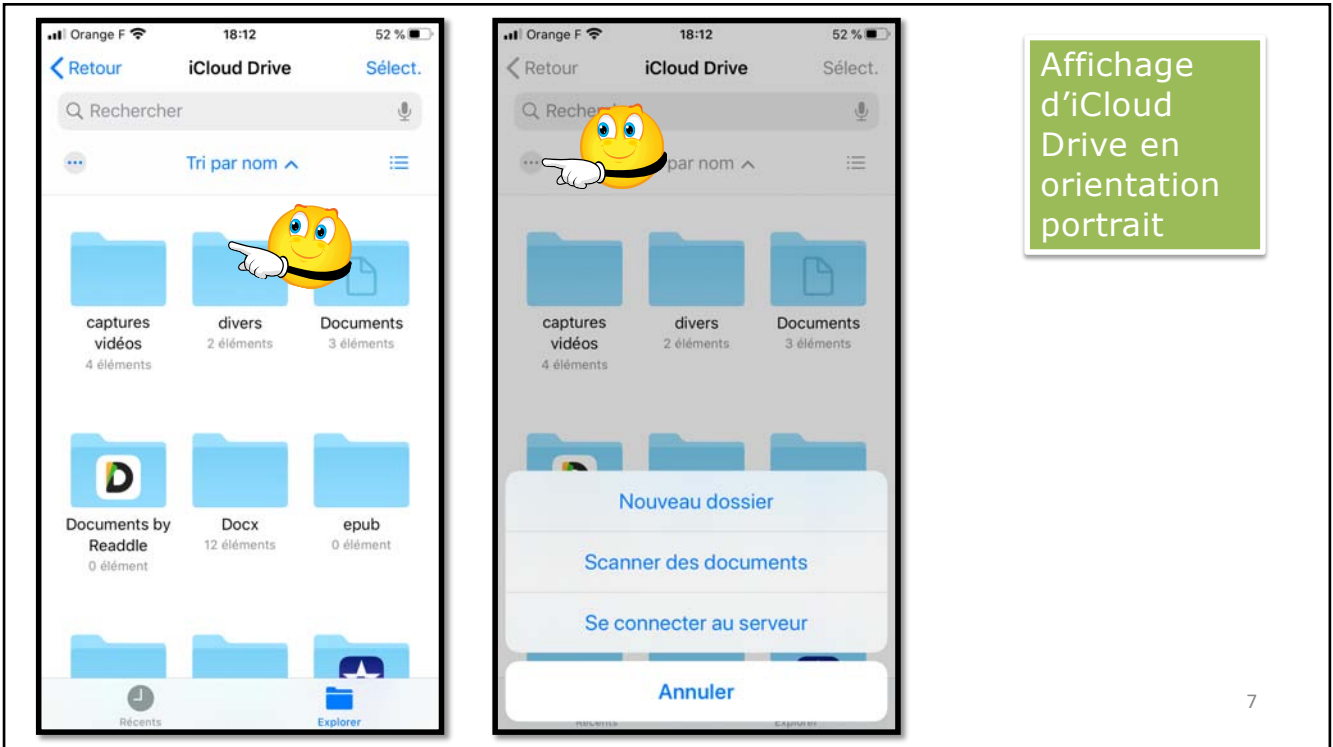
4



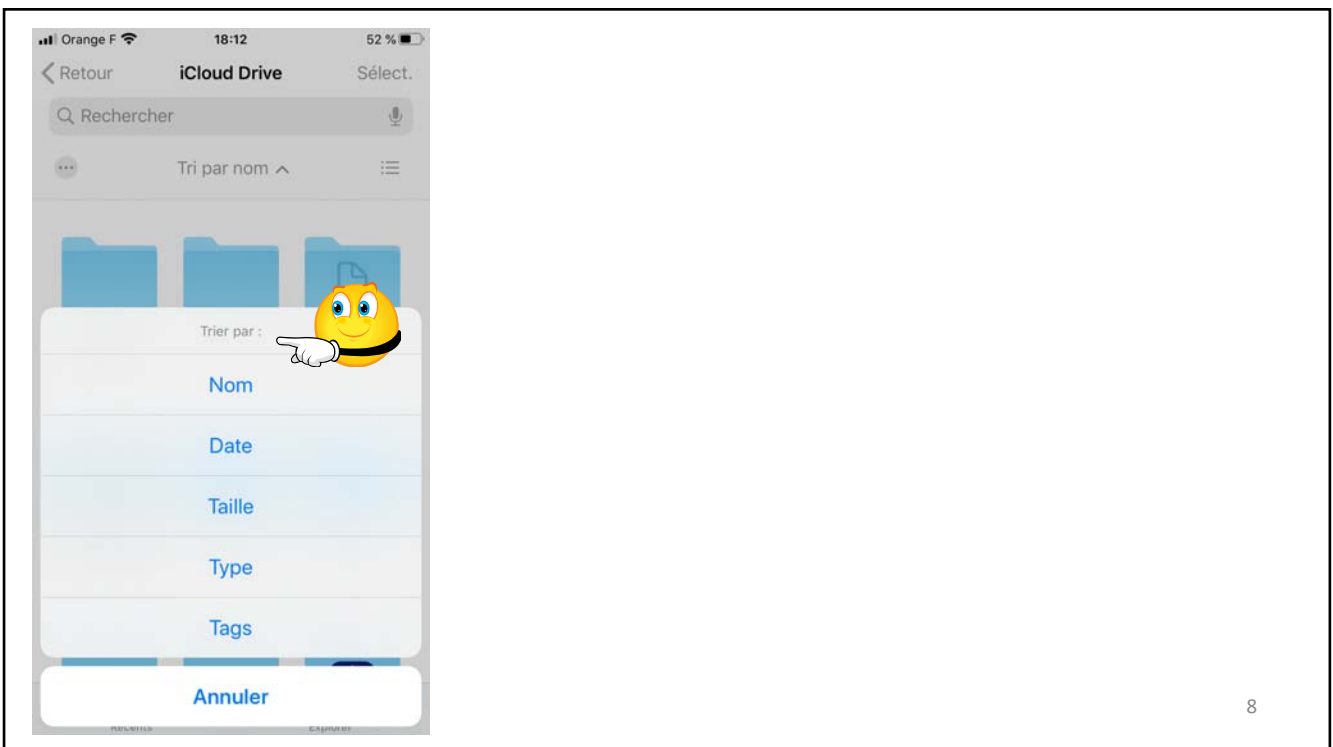
5



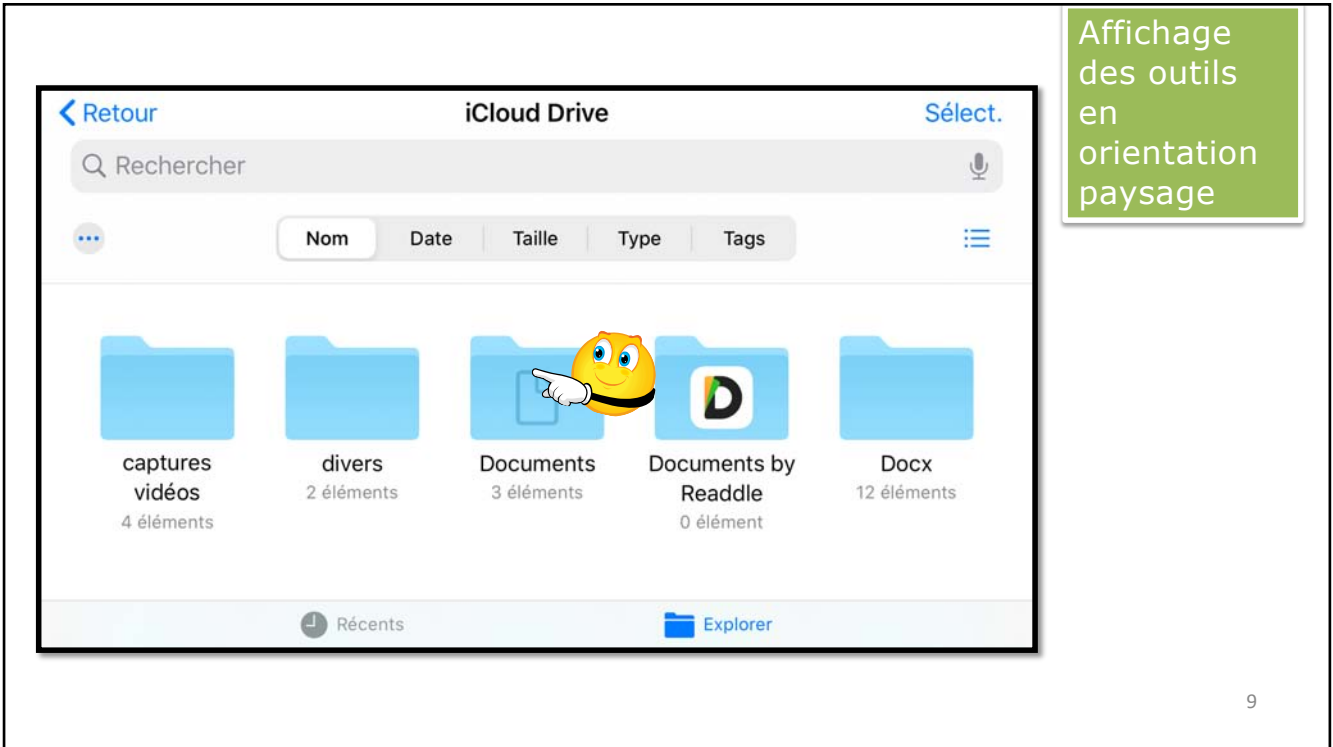
6



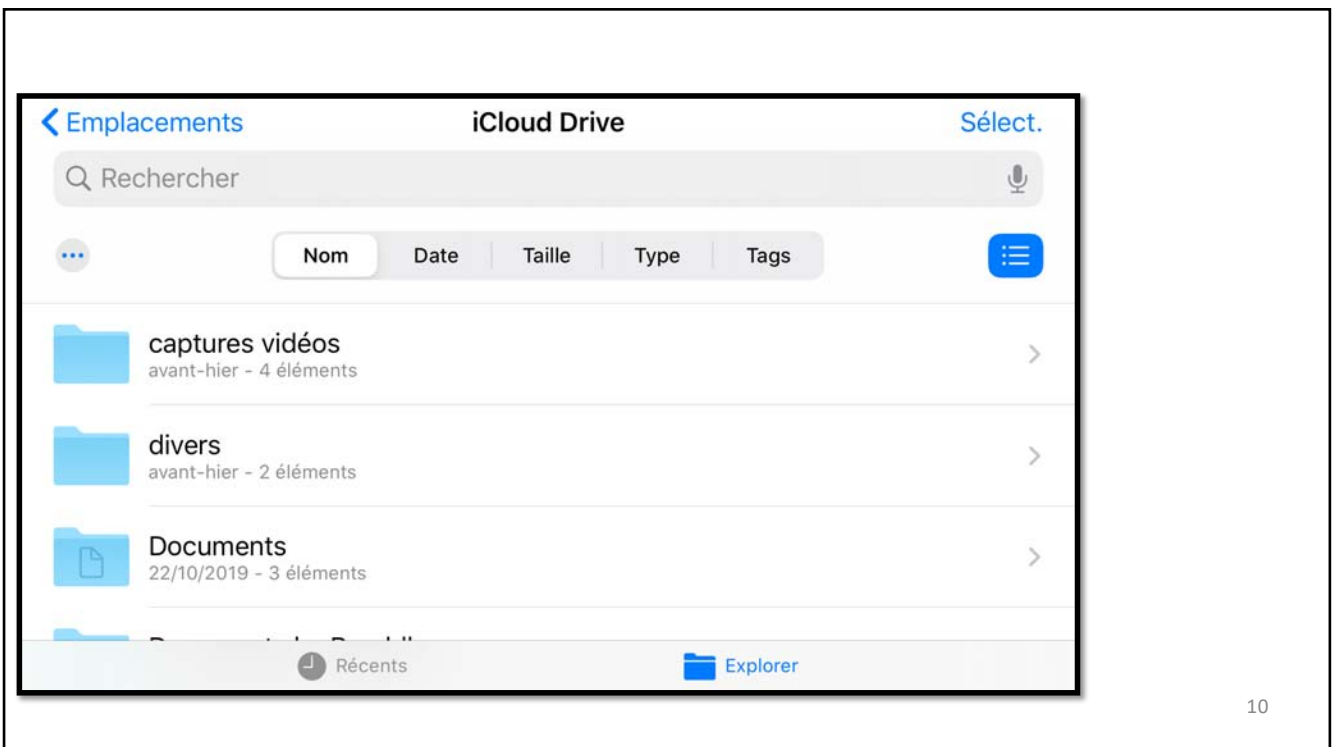
7



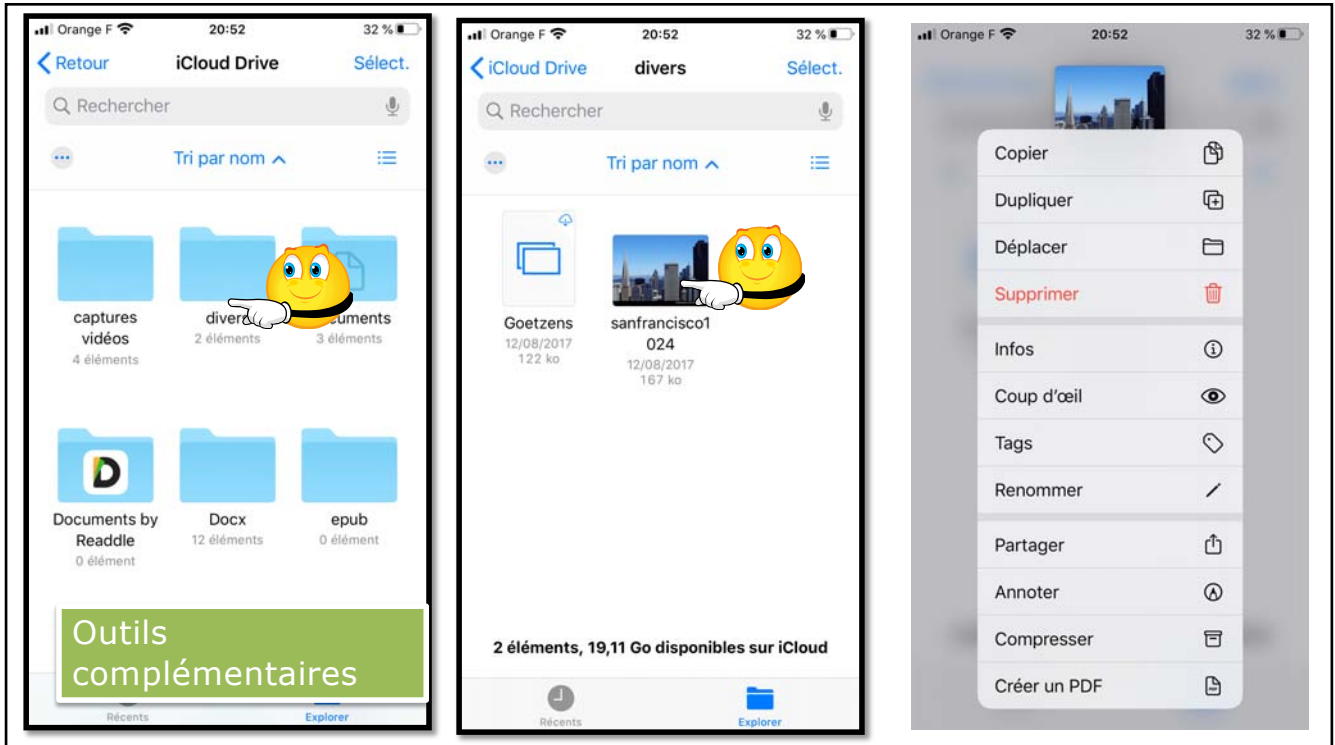
8



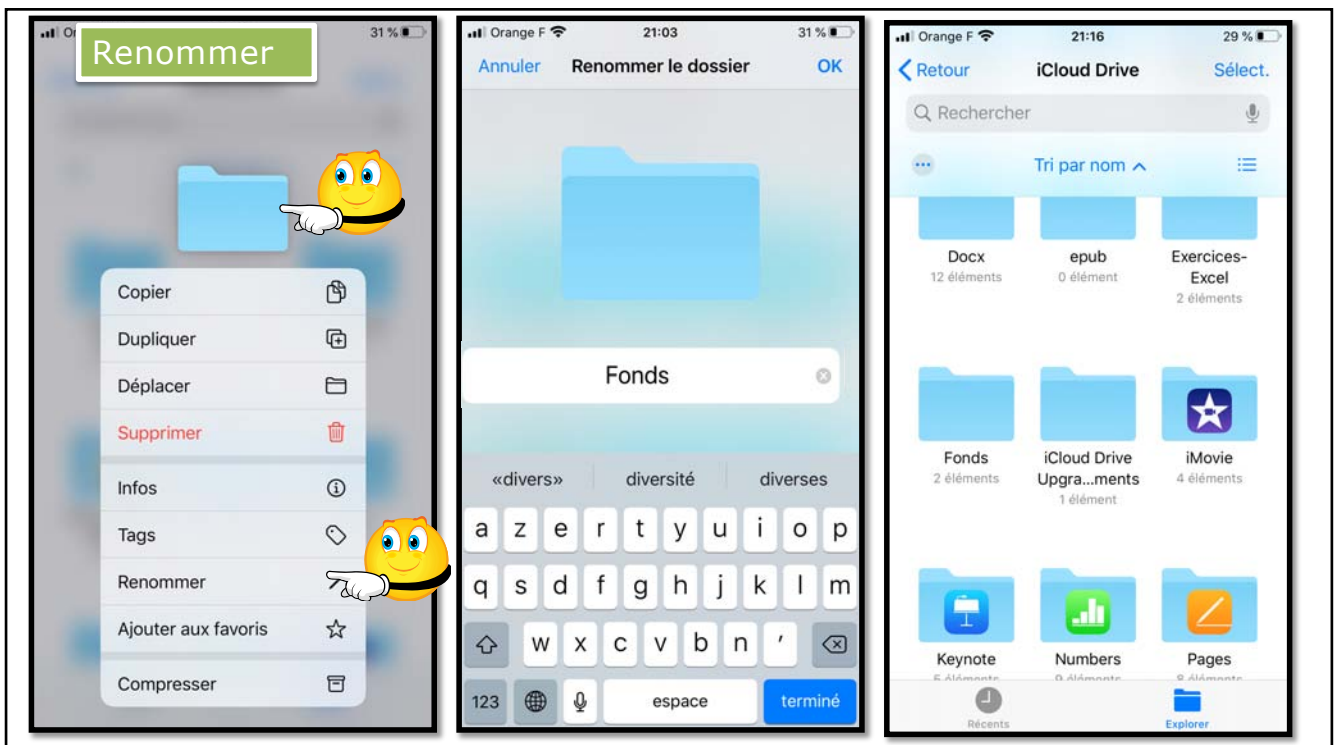
9



10

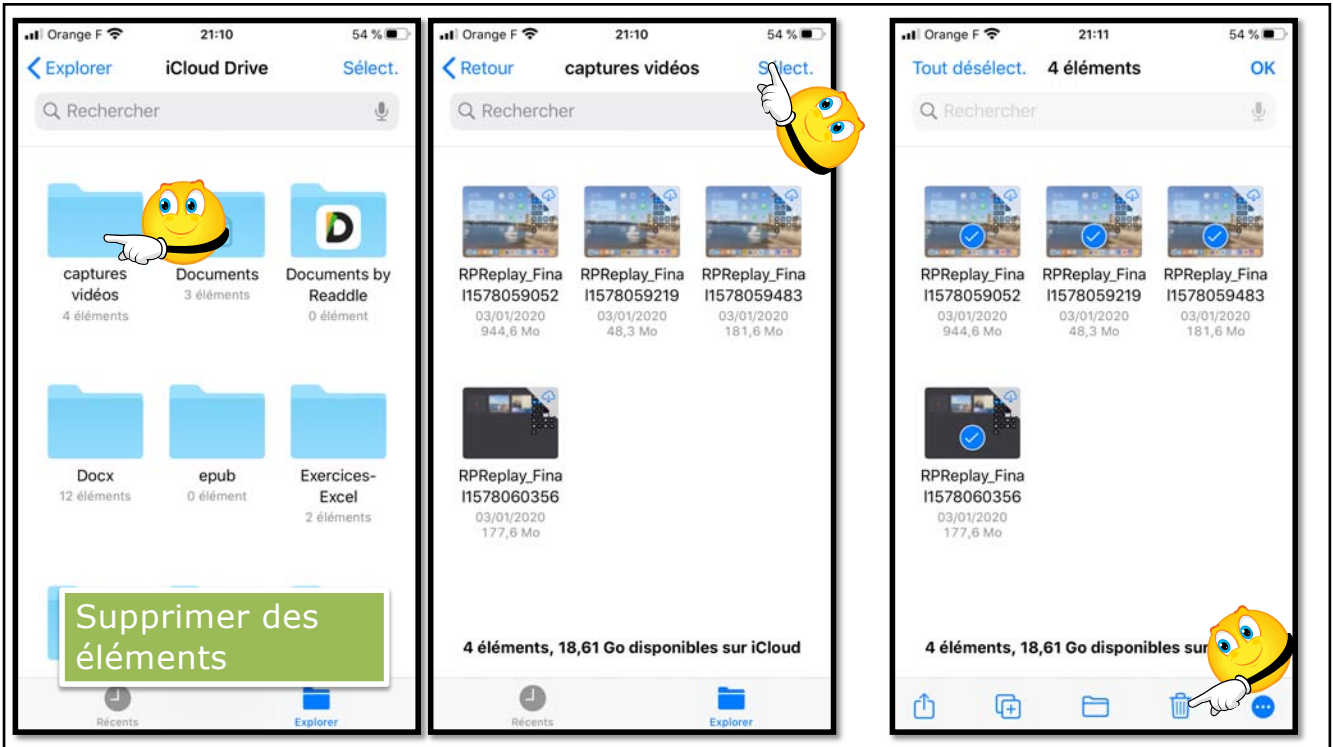


11

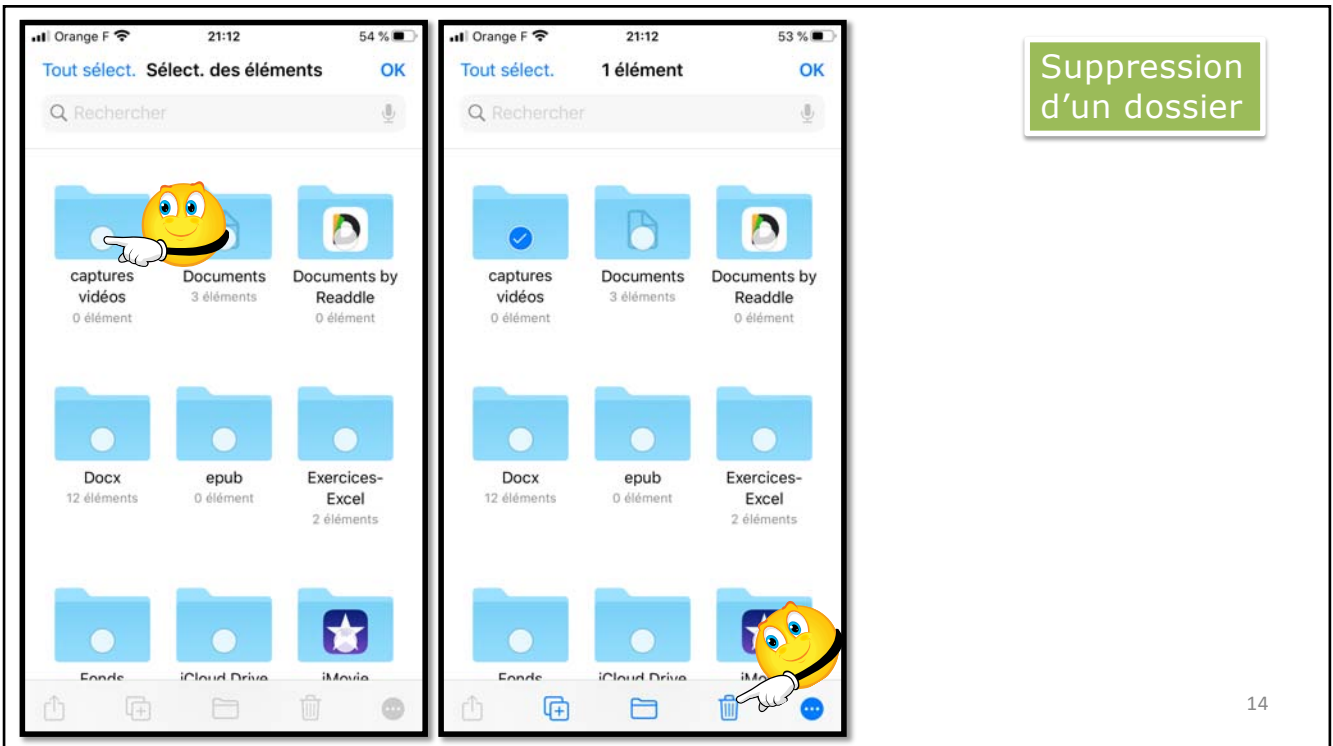


12

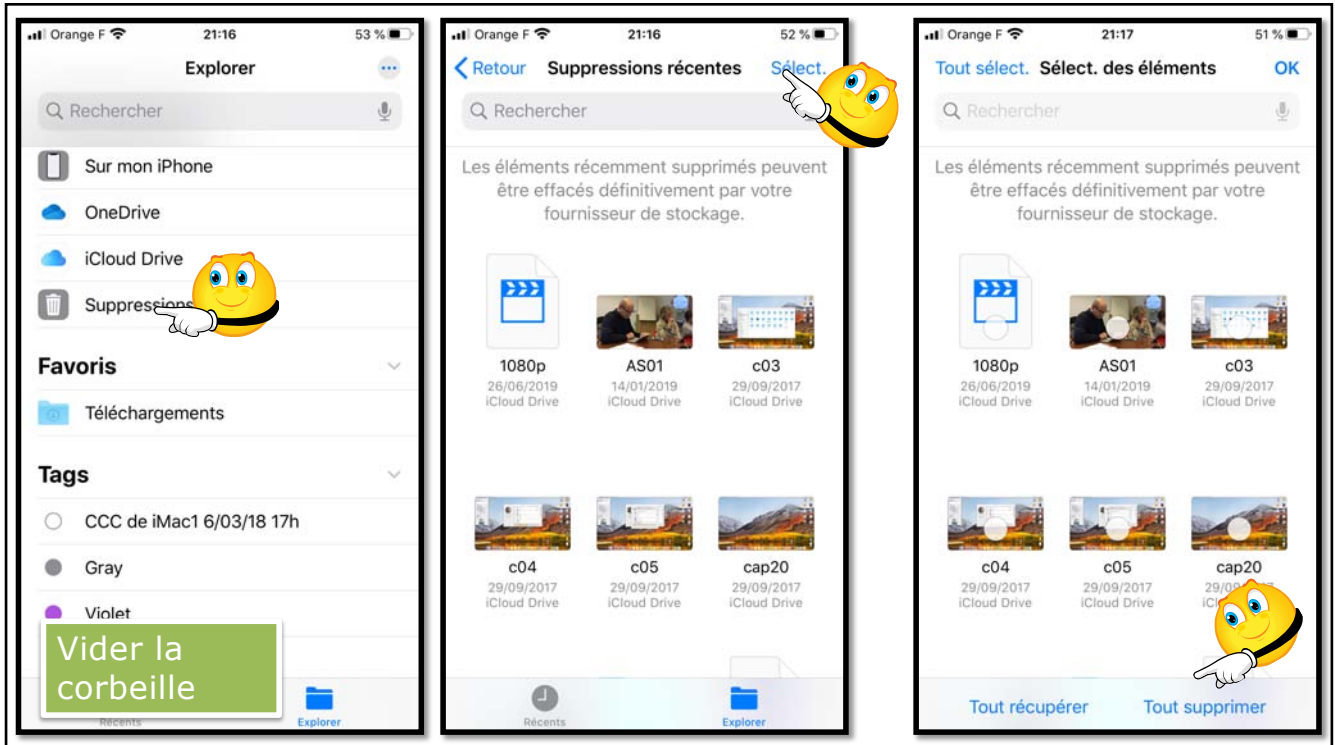




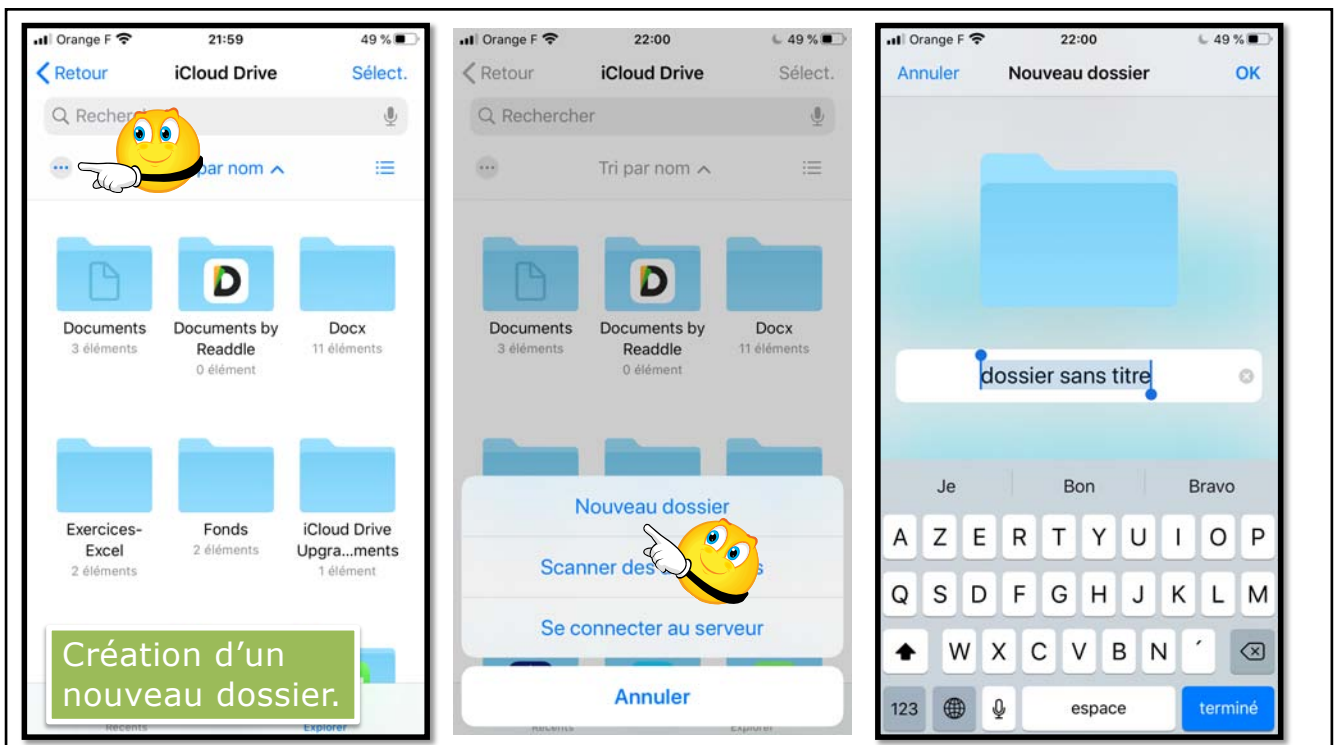
13



14

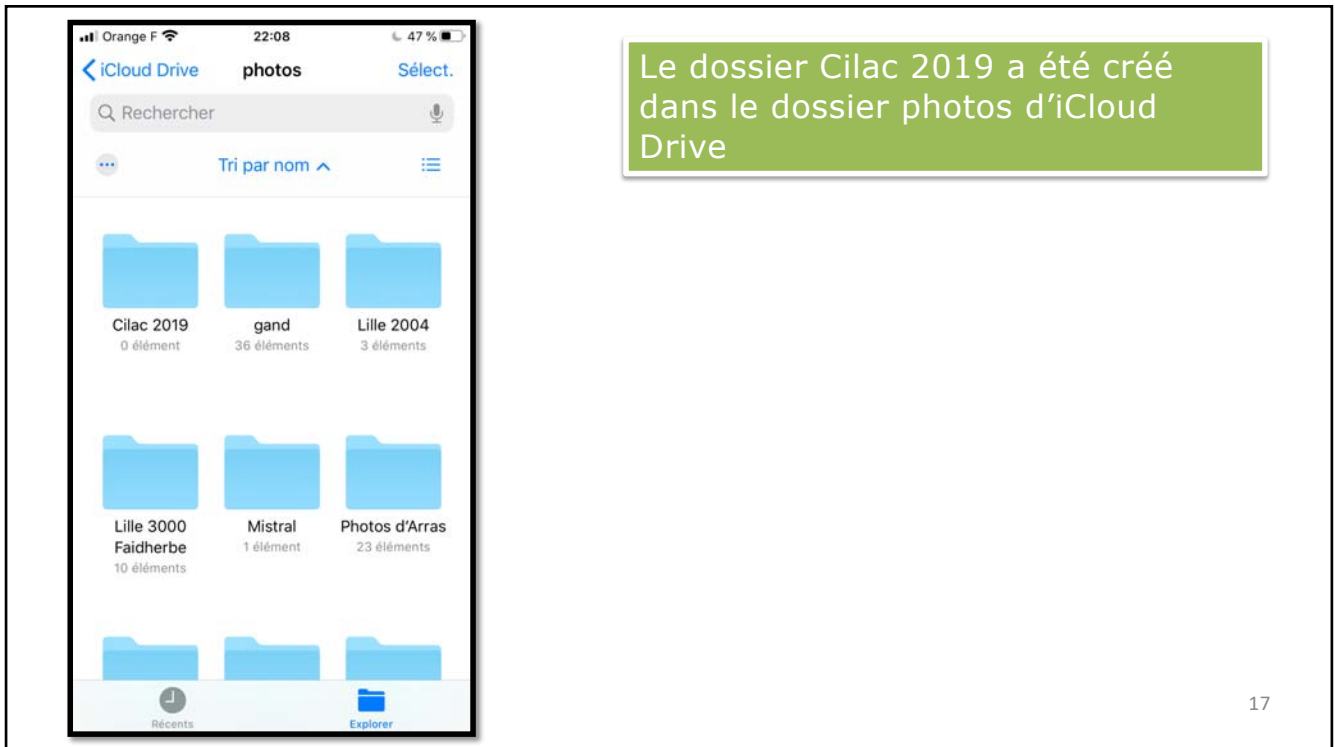


15



16





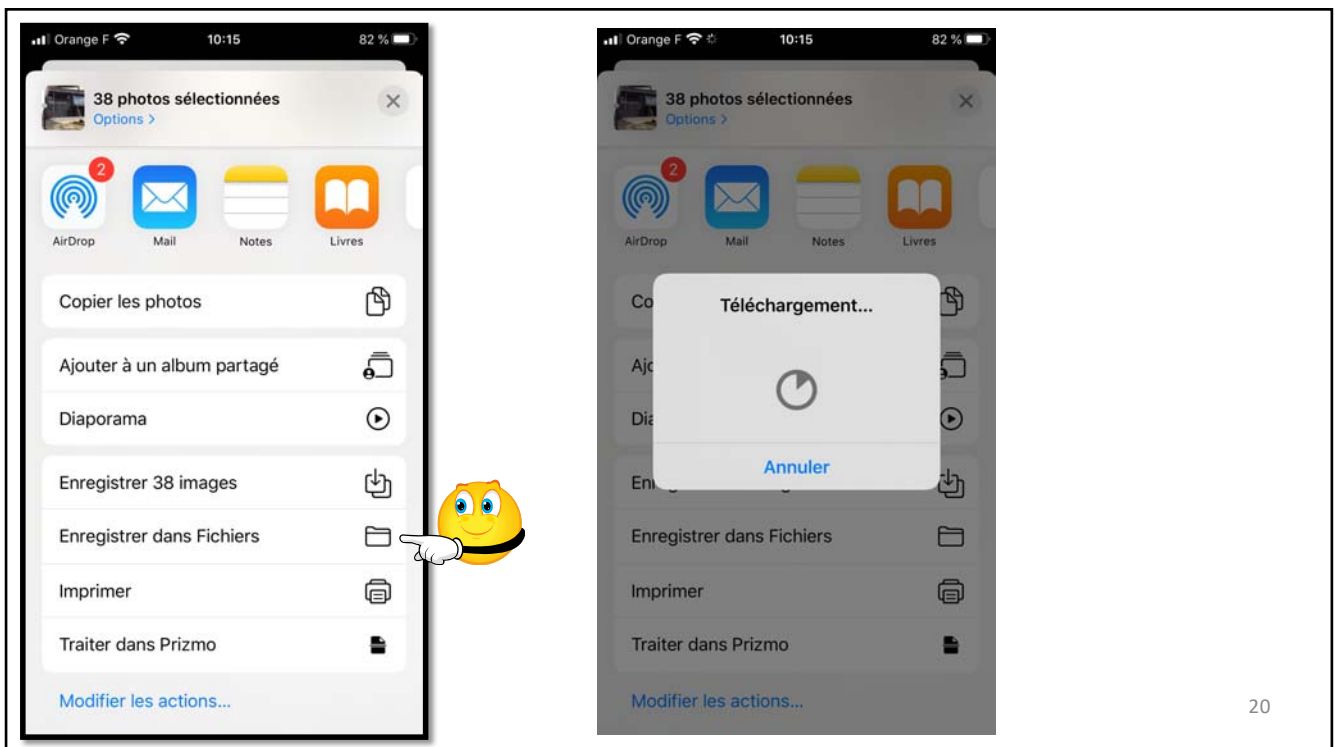
17



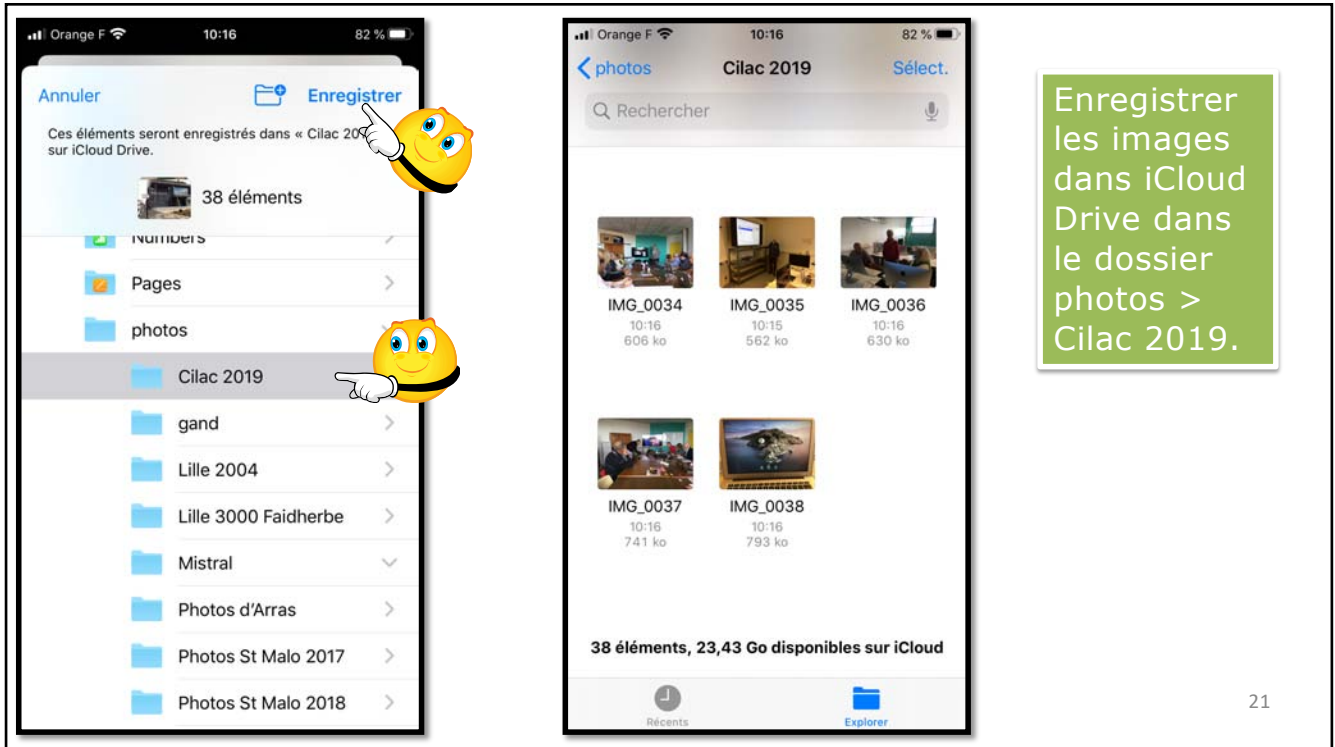
18



19



20



21



22

## POUR MÉMOIRE: CLÉS USB POUR IOS EXISTANTES



Clé Leef que j'utilise depuis juin 2015

<http://www.cornil.com/abm/FP21-ibridge.pdf>

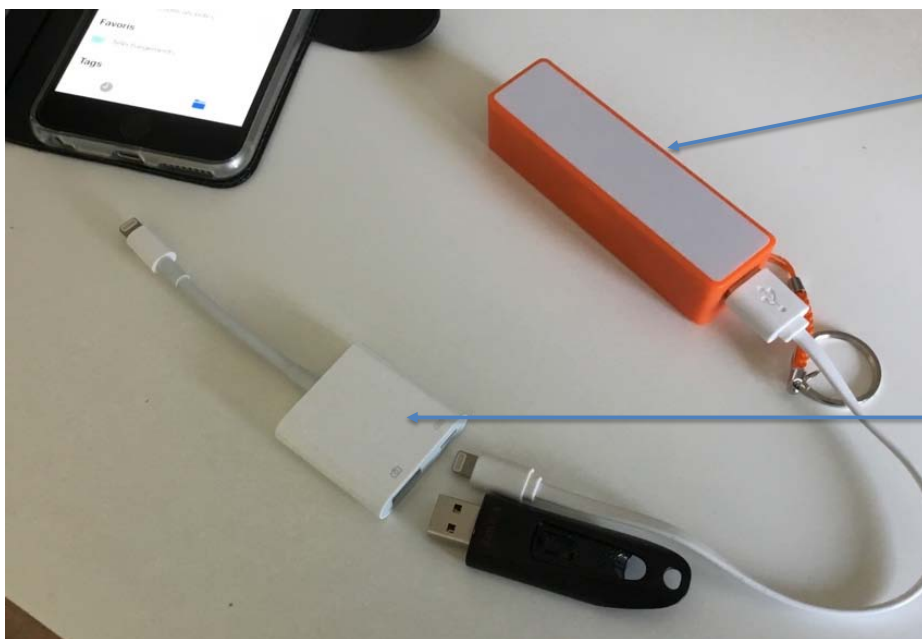


Une des autres types de clés Lightning (ici PNY)

23

23

## BRANCHEMENT DE LA CLÉ USB3 SUR L'IPHONE



Ici utilisation d'une batterie externe (1000 mA) pour l'alimentation.

Adaptateur Photos USB3 Lightning (45€)

24

24

## BRANCHEMENT DE LA CLÉ USB3 SUR L'IPHONE



Si on n'a pas de batterie externe on utilisera l'alimentation habituelle de l'iPhone



25

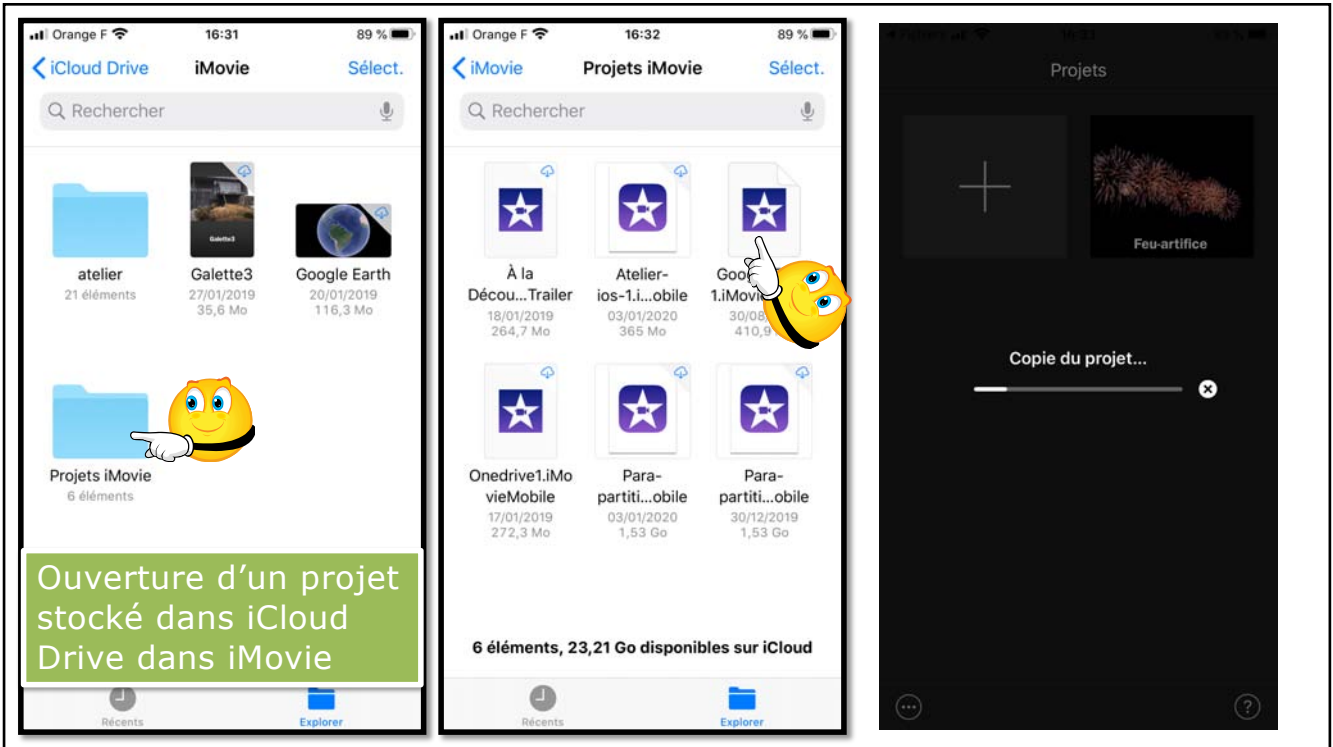
25



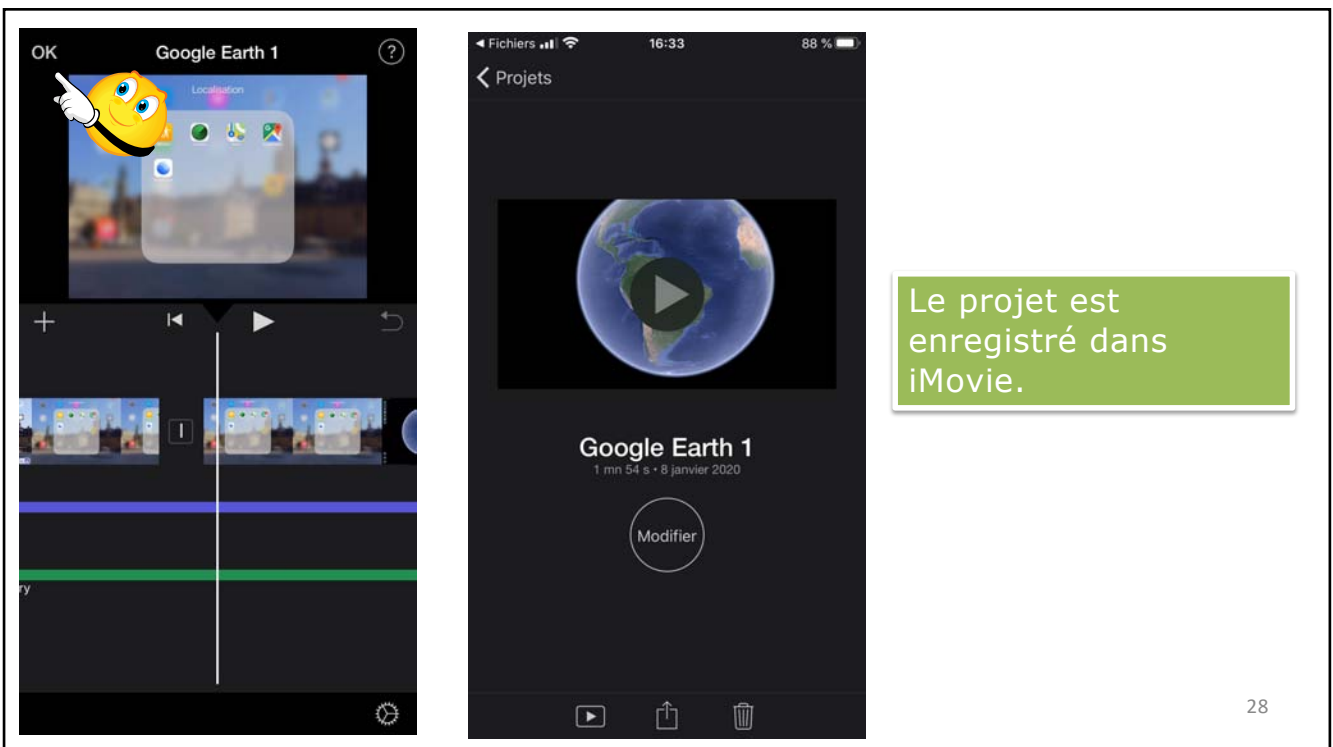
iMovie et iCloud Drive



26



27

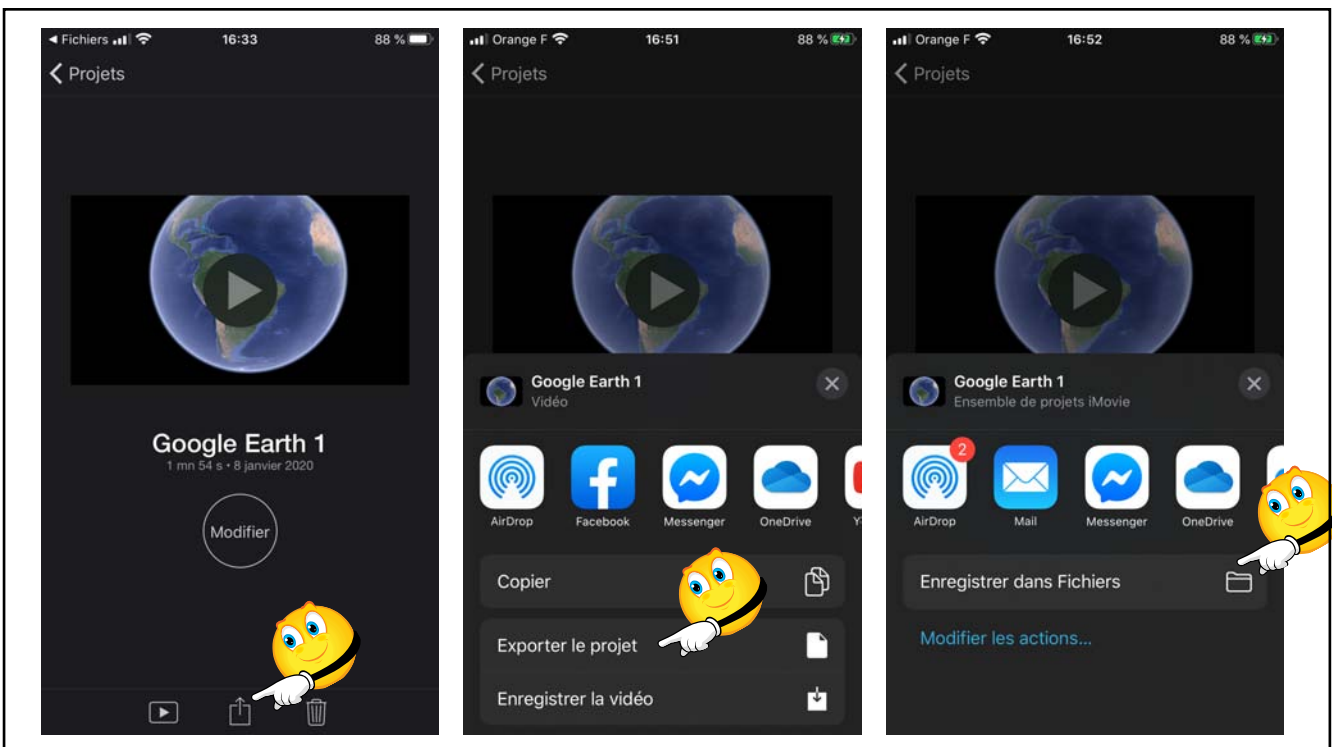


28

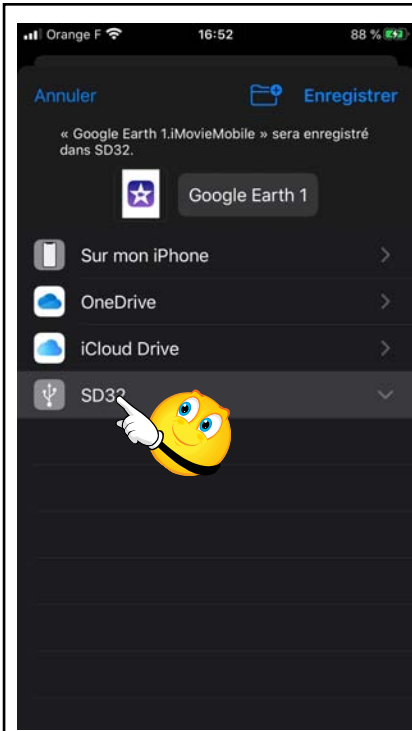




29

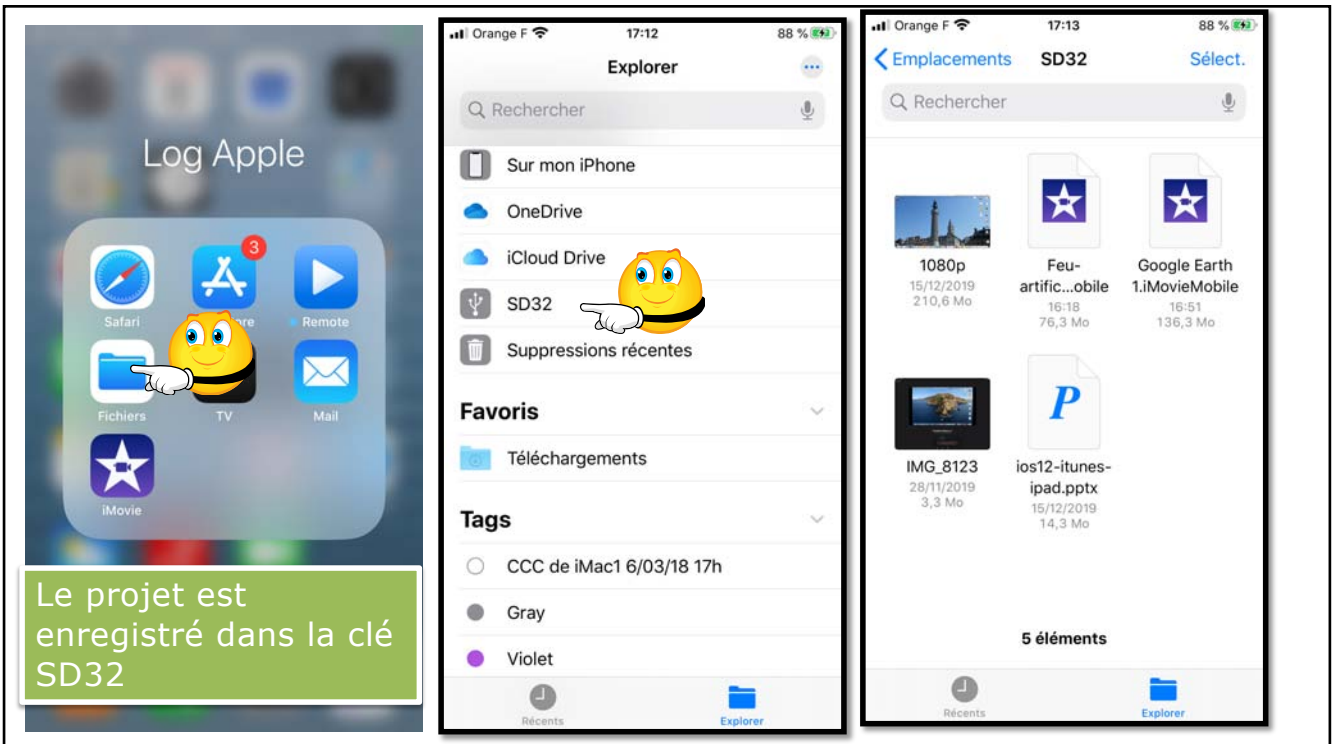


30



31

31



32



33



34



35



36





37